

**MR20 (A952)**

## PARTS CATALOG

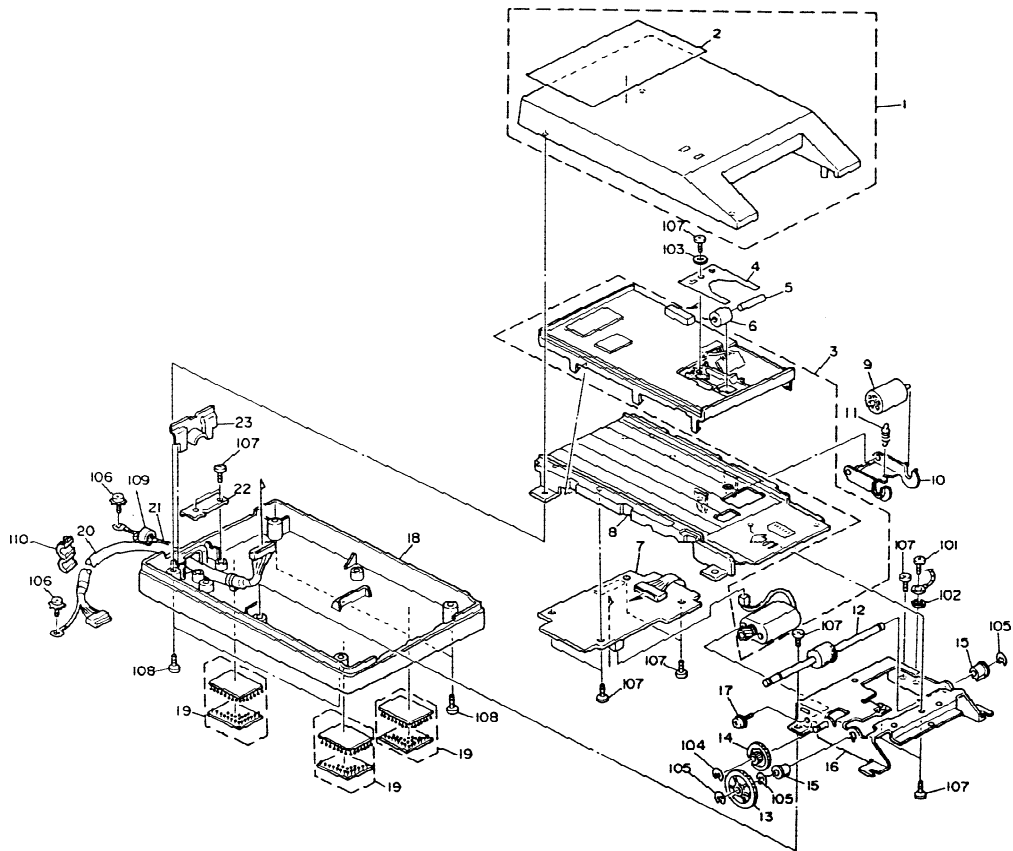
### INTRODUCTION

This chapter instructs you the numbers and names of these parts on this machine.

### INDEX to PARTS CATALOG

1. MENU READER (A952) .....	2
2. DECAL AND DOCUMENT (A952) .....	4
<b>Parts Index</b> .....	<b>6</b>

# 1. MENU READER (A952)

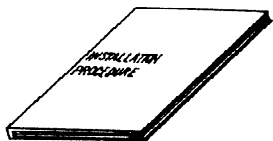


Index No.	Part No.	Description	Qty per Assembly
1	A952 1021	Upper Cover - LT	1
	A952 1001	x/x MB2	1
1	A952 1023	Upper Cover - A4	1
	A952 1004	x/x MB2	1
2	A952 1003	Indicator Decal - English	1
2	A952 2001	Indicator Decal - Multi	1
3	A952 9500	Sheet Read Boards & Motor	1
4	A952 1150	Leaf Spring	1
5	A952 1151	Shaft - Upper Transport Roller	1
6	A952 1152	Upper Transport Roller	1
7	A952 1160	Motor Control Board	1
8	A952 1105	Menu Sheet Table - LT	1
8	A952 1106	Menu Sheet Table - A4	1
9	A952 1161	Sheet Read Roller	1
10	A952 1162	Bracket - Sheet Read Roller	1
11	A952 1163	Spring - Sheet Read Roller	1
12	A952 1171	Lower Transport Roller	1
13	A952 1172	Gear - 62Z	1
14	A952 1173	Gear - 46Z	1
15	A952 1174	Bushing	2
16	A952 1176	Motor Bracket	1
17	A952 1177	Motor Screw	2
18	A952 1203	Lower Cover	1
19	A952 1250	Velcro	3
20	A952 1204	Interface Harness	1
21	A952 1205	Grunding Wire - 115V	1
21	A952 1209	Grunding Wire - 220/240V	1
22	A952 1251	Harness Clamp	1
23	A952 1207	Shielding Plate	1

Index No.	Part No.	Description	Qty per Assembly
101	0312 5060M	Philips Pan Head Screw - M2.5x6	
102	0704 0025J	Toothed Washer - M2.5	
103	0708 0025B	Flat Washer - M2.5	
104	0720 0020B	Retaining Ring - M2	
105	0720 0030B	Retaining Ring - M3	
106	0801 1185	Philips Truss Head Screw - M4x8	
107	0412 6062B	Tapping Screw - M2.6x6	
	0985 2560B	Tapping Screw - M2.5x6 x/o MB1	
108	0314 0080W	Philips Pan Head Screw - M4x8	
	0412 6082B	Tapping Screw - M2.6x8 x/x MB2	
	0985 2580B	Tapping Screw - M2.5x8 x/o MB1	
109	1607 0432	Ferrite Core - ESD-R-19C MB2 (Added)	
110	1607 0430	Ferrite Core - TRCC-23-11-14 MB3 (Added)	






## 2. DECAL AND DOCUMENT (A952)

1



2

**Indicators**

-  When the red light is on, check the operation panel.
-  When the red and green lights are blinking, turn the cooler off and on.
-  When the green light is blinking, reinsert the job sheet into the Menu Reader.
-  When the red light is blinking, confirm that the job sheet is filled out correctly.
-  When the green light is on, the Menu Reader is ready.

**2. DECAL AND DOCUMENT (A952)**

Index No.	Part No.	Description	Q'ty per Assembly
1	A952 8610	Installation Procedure - English	1
1	A952 8615	Installation Procedure - Malti	1
2	A952 1003	Indicator Decal - English	1
2	A952 2001	Indicator Decal - Multi	1

Index No.	Part No.	Description	Q'ty per Assembly
-----------	----------	-------------	-------------------

# **PARTS INDEX**

Part No.	Description	Paper and Index No.
A952 1001	x/x MB2	3- 1
A952 1003	Indicator Decal - English	3- 2
A952 1003	Indicator Decal - English	5- 2
A952 1004	x/x MB2	3- 1
A952 1021	Upper Cover - LT	3- 1
A952 1023	Upper Cover - A4	3- 1
A952 1105	Menu Sheet Table - LT	3- 8
A952 1106	Menu Sheet Table - A4	3- 8
A952 1150	Leaf Spring	3- 4
A952 1151	Shaft - Upper Transport Roller	3- 5
A952 1152	Upper Transport Roller	3- 6
A952 1160	Motor Control Board	3- 7
A952 1161	Sheet Read Roller	3- 9
A952 1162	Bracket - Sheet Read Roller	3- 10
A952 1163	Spring - Sheet Read Roller	3- 11
A952 1171	Lower Transport Roller	3- 12
A952 1172	Gear - 62Z	3- 13
A952 1173	Gear - 46Z	3- 14
A952 1174	Bushing	3- 15
A952 1176	Motor Bracket	3- 16
A952 1177	Motor Screw	3- 17
A952 1203	Lower Cover	3- 18
A952 1204	Interface Harness	3- 20
A952 1205	Grinding Wire - 115V	3- 21
A952 1207	Shielding Plate	3- 23
A952 1209	Grinding Wire - 220/240V	3- 21
A952 1250	Velcro	3- 19
A952 1251	Harness Clamp	3- 22
A952 2001	Indicator Decal - Multi	3- 2
A952 2001	Indicator Decal - Multi	5- 2
A952 8610	Installation Procedure - English	5- 1
A952 8615	Installation Procedure - Malti	5- 1
A952 9500	Sheet Read Boards & Motor	3- 3

Part No.	Description	Paper and Index No.
0312 5060M	Philips Pan Head Screw - M2.5x6	3-101
0314 0080W	Philips Pan Head Screw - M4x8	3-108
0412 6062B	Tapping Screw - M2.6x6	3-107
0412 6082B	Tapping Screw - M2.6x8 x/x MB2	3-108
0704 0025J	Toothed Washer - M2.5	3-102
0708 0025B	Flat Washer - M2.5	3-103
0720 0020B	Retaining Ring - M2	3-104
0720 0030B	Retaining Ring - M3	3-105
0801 1185	Philips Truss Head Screw - M4x8	3-106
0985 2560B	Tapping Screw - M2.5x6 x/o MB1	3-107
0985 2580B	Tapping Screw - M2.5x8 x/o MB1	3-108
1607 0430	Ferrite Core - TRCC-23-11-14 MB3 (Added)	3-110
1607 0432	Ferrite Core - ESD-R-19C MB2 (Added)	3-109